

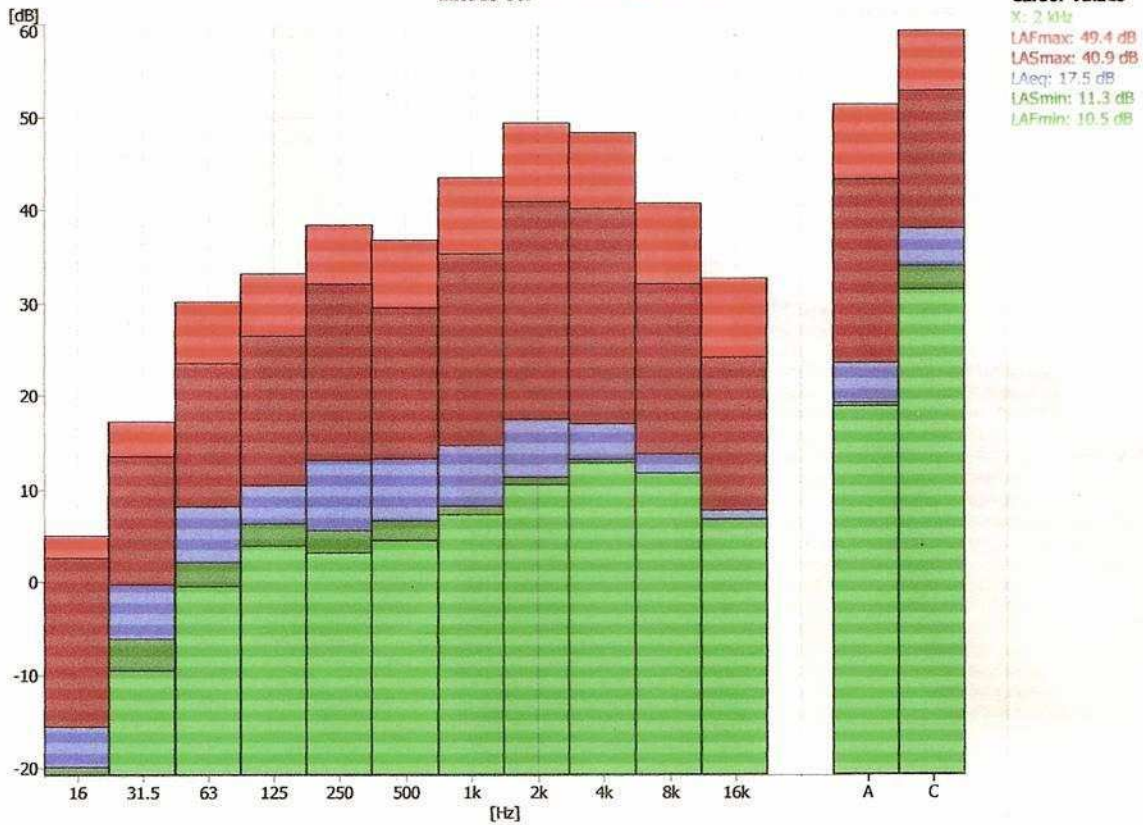
110719 008 Total 1/1/0001 12:00:00 AM (room 1 with out ac)

Frequency	LAFmax	LASmax	LAFmin	LASmin	LAeq
16Hz	23.18	20.62	-17.18	-16.06	-2.21
31.5Hz	24.54	20.24	-6.01	-4.15	4.68
63Hz	33.87	26.38	-2.5	0.84	10.26
125Hz	34.51	30.06	2.82	5.15	13.97
250Hz	35.95	31.05	4.68	7	15.56
500Hz	43.18	35.68	4.59	7.25	17.07
1kHz	45.28	37.5	7.59	8.41	18.6
2kHz	50.57	41.91	10.67	11.26	19.15
4kHz	42.71	34.36	12.74	13.23	17.1
8kHz	39.25	30.8	11.63	11.72	13.87
16kHz	33.65	25.13	6.77	6.49	8.03
A	51.54	42.94	18.71	19.19	25.6
C	82.46	75.99	32.36	34.67	53.39



# NISH

110719 007



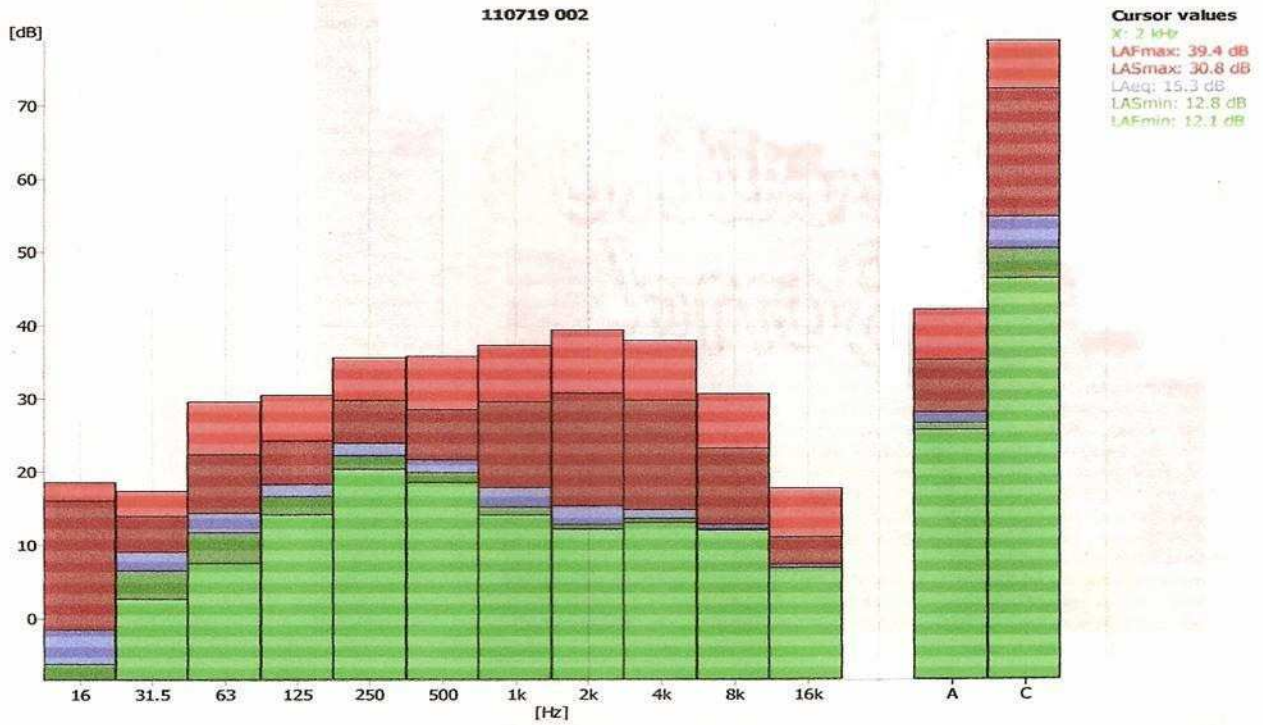
110719 007 Total 1/1/0001 12:00:00 AM room (B) 3 with out ac

Frequency	LAFmax	LASmax	LAFmin	LASmin	LAeq
16Hz	7.14	5.23	-6.16	-4.5	-1
31.5Hz	15.52	13.04	4.02	6.33	8.51
63Hz	23.36	19.44	9.64	13.59	15.93
125Hz	25.33	20.65	13.51	15.6	17.26
250Hz	30.86	27.84	23.07	25.41	26.54
500Hz	33.13	27.08	17.05	18.31	20.25
1kHz	38.93	30.6	12.77	13.61	16.99
2kHz	38.74	30.42	11.44	12.04	15.91
4kHz	38.64	30.5	12.87	13.25	15.89
8kHz	38.36	29.96	11.74	12.15	13.81
16kHz	29.11	20.77	6.79	7.03	7.75
A	42.76	35.37	26.75	27.9	29.09
C	63.52	58.73	46.22	50.95	54.19



# NISH

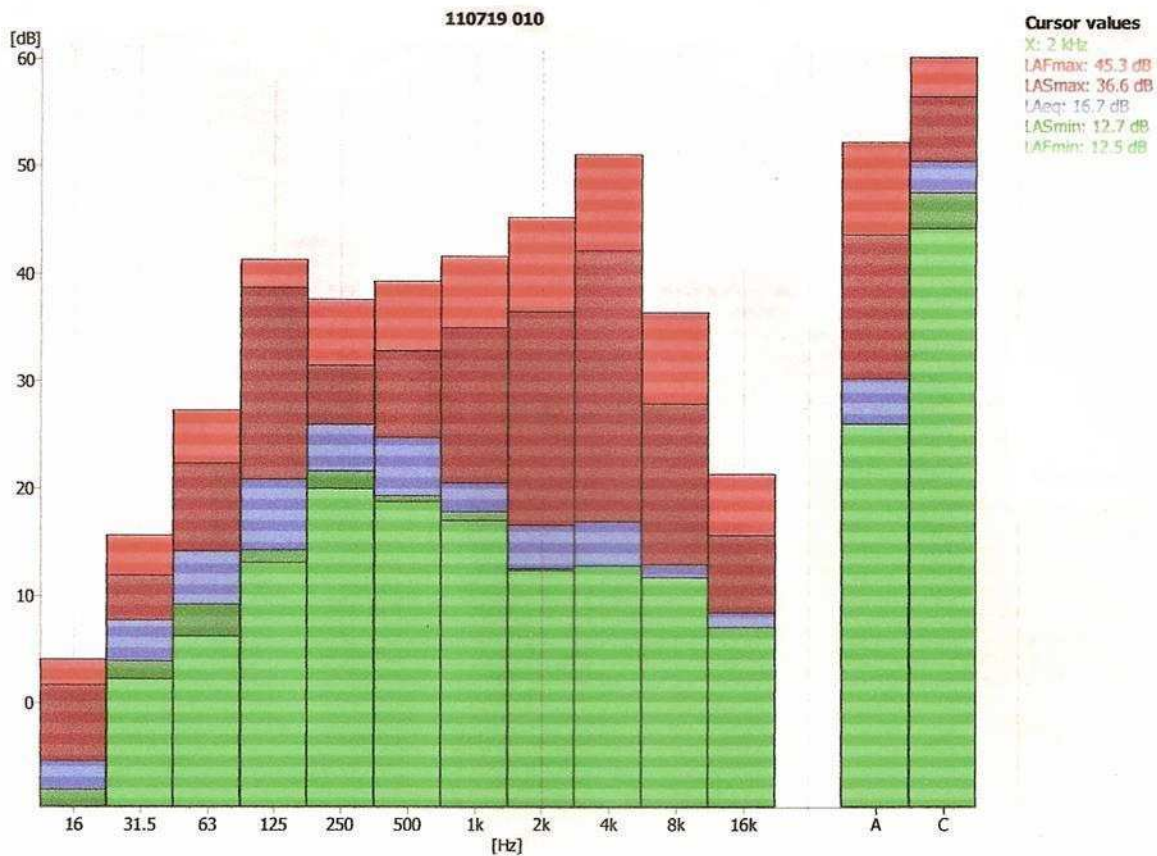
## FREQUENCY SPECIFIC NOISE MEASUREMENT



110719 002 - ROOM 1 (A) with ac

Frequency	LAFmax	LASmax	LAFmin	LASmin	LAeq
16Hz	18.53	16.02	-8.56	-6.3	-1.59
31.5Hz	17.3	13.88	2.63	6.48	9.02
63Hz	29.58	22.31	7.49	11.65	14.3
125Hz	30.49	24.21	14.07	16.56	18.27
250Hz	35.62	29.73	20.31	22.14	23.88
500Hz	35.85	28.53	18.55	19.86	20.58
1kHz	37.32	29.57	14.02	15.12	17.82
2kHz	39.43	30.79	12.11	12.77	15.34
4kHz	38.01	29.8	13.01	13.55	14.8
8kHz	30.7	23.19	11.97	12.17	12.83
16kHz	17.71	10.97	6.82	6.76	7.35
A	42.2	35.33	25.69	26.67	28.12
C	79	72.41	46.41	50.5	54.89

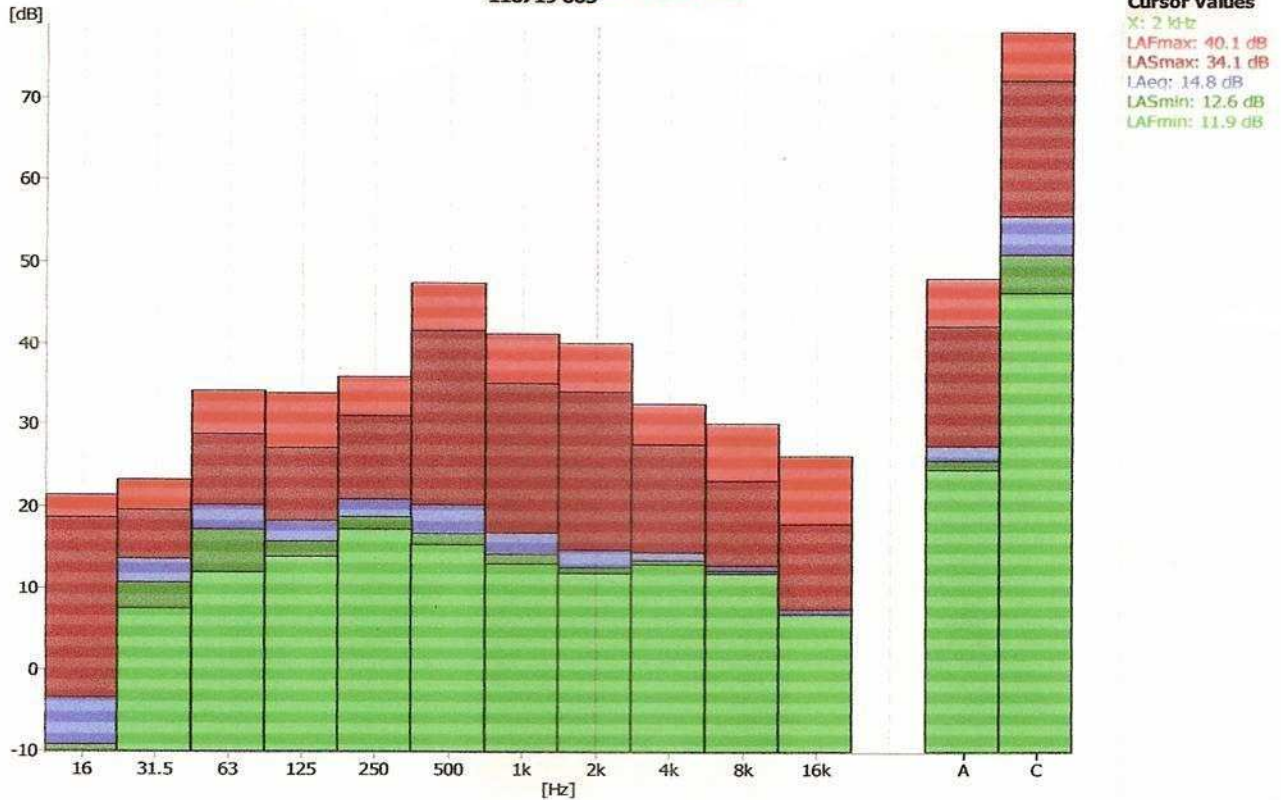




110719 010 Total 1/1/0001 12:00:00 AM (room 2 with ac)

Frequency	LAFmax	LASmax	LAFmin	LASmin	LAeq
16Hz	4.15	1.72	-9.59	-7.89	-5.25
31.5Hz	15.74	12.02	2.31	3.99	7.78
63Hz	27.32	22.4	6.3	9.3	14.3
125Hz	41.38	38.79	13.24	14.38	20.92
250Hz	37.73	31.52	20.07	21.68	25.99
500Hz	39.43	32.93	18.88	19.42	20.79
1kHz	41.7	35.08	17.15	17.99	20.62
2kHz	45.32	36.6	12.49	12.66	16.74
4kHz	51.17	42.26	12.93	12.32	17.06
8kHz	36.55	27.95	11.82	10.85	13.07
16kHz	21.41	15.77	7.12	7.12	8.53
A	52.42	43.76	26.08	25.88	30.38
C	60.37	56.69	44.37	47.67	50.64





110719 003 - Room 3 (B)- with ac

Frequency	LAFmax	LASmax	LAFmin	LASmin	LAeq
16Hz	21.43	18.68	-10.08	-9.16	-3.42
31.5Hz	23.29	19.63	7.51	10.72	13.63
63Hz	34.19	28.83	12	17.26	20.29
125Hz	33.9	27.15	13.93	15.79	18.35
250Hz	35.95	31.1	17.33	18.78	20.97
500Hz	47.52	41.64	15.44	16.78	20.31
1kHz	41.3	35.12	13.04	14.22	16.86
2kHz	40.12	34.11	11.93	12.63	14.81
4kHz	32.62	27.66	13.03	13.51	14.5
8kHz	30.24	23.27	11.86	12.22	12.89
16kHz	26.28	18.02	6.86	6.57	7.47
A	48.2	42.29	24.62	25.71	27.54
C	78.48	72.47	46.42	51.11	55.77

